

Henry County, Illinois



Manufacturing



Energy



Agriculture



Tourism



Strategic Location



Community

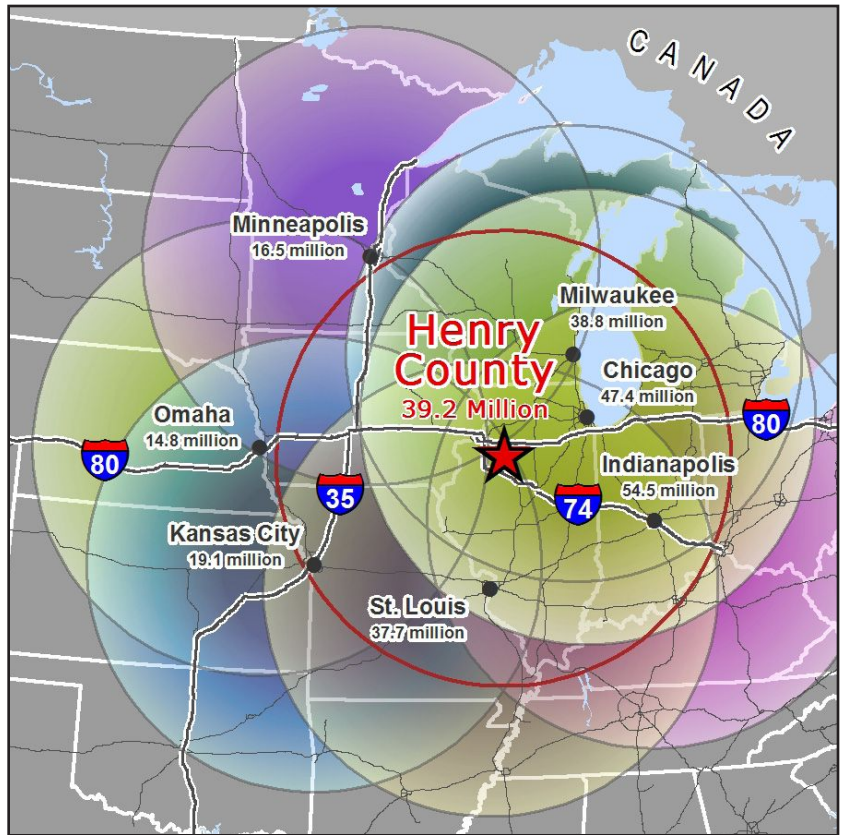


Location & Geography

Henry County is strategically located at a transportation crossroad in western Illinois. Interstates 80 and 74 intersect the county. 869 square miles. Commercial and passenger rail transportation are located in strategic areas throughout the county. As part of the Davenport-Moline-Rock Island, IA-IL Metropolitan Statistical Area, known as the Quad Cities, the 300 mile market includes the seven major metropolitan areas of Chicago, Indianapolis, Kansas City, Milwaukee, Minneapolis-St. Paul, Omaha and St. Louis, reaching a population of 39 million.

Henry County has 484,285 acres of rich, productive farmland, as well as ease of access to the Mississippi and Rock Rivers. Henry County is a 2-hour drive west of Chicago and one hour northwest of Peoria.

Source: HCEDP and USDA Census of Agriculture, 2017



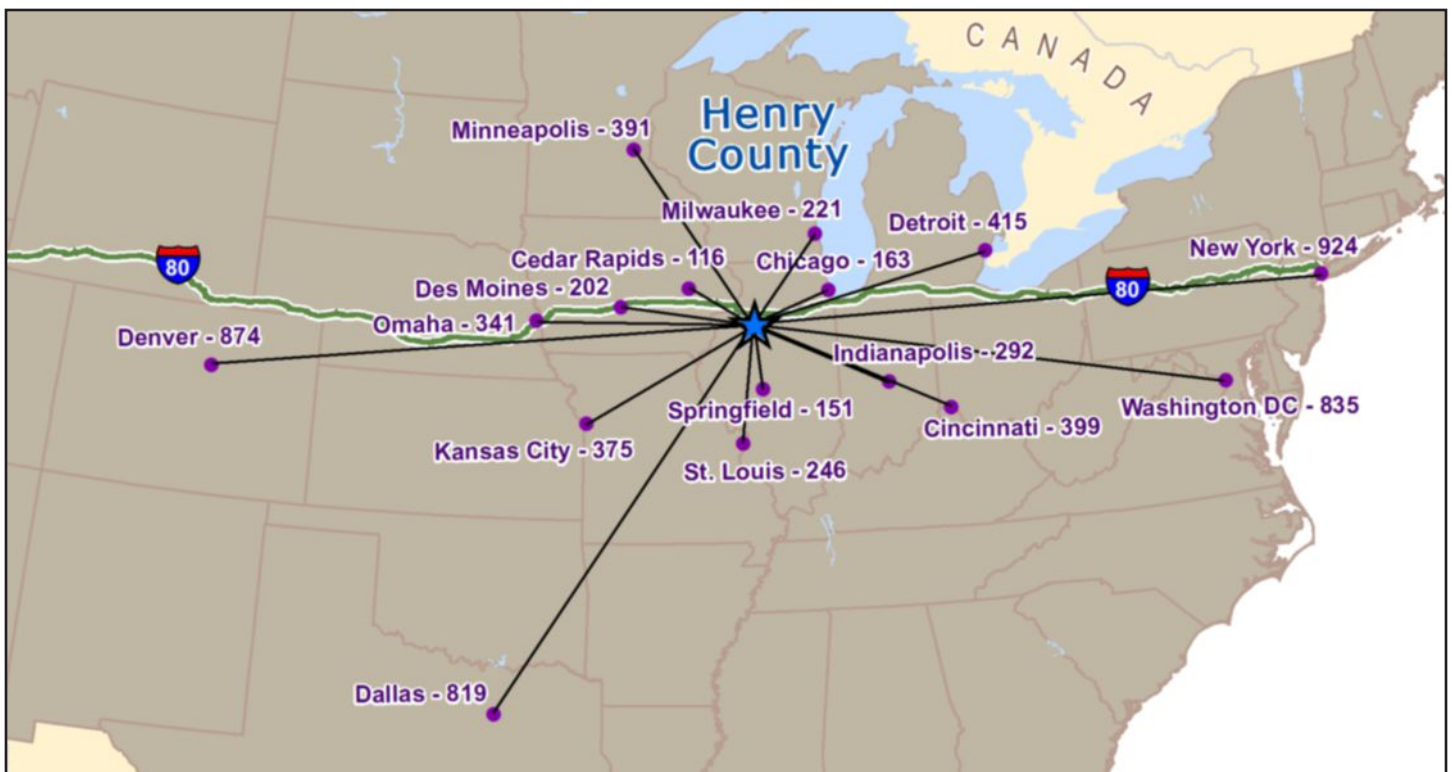
300 Mile Market Population

Henry County	39,216,646
Indianapolis, IN	54,498,599
Chicago, IL	47,366,236
Milwaukee, WI	38,758,316

St. Louis, MO	37,661,995
Kansas City, MO	19,073,161
Minneapolis, MN	16,467,628
Omaha, NE	14,835,575

Source: ESRI, Community Analyst, 2010 Census Data

Road Mileage

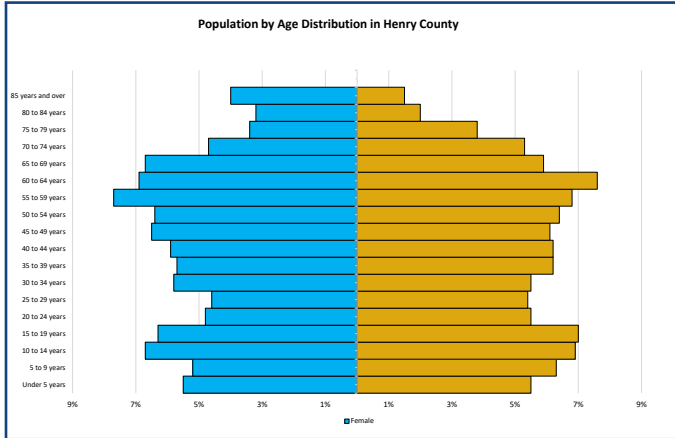


Source: Google Maps

Demographics

Age

Median Age..... 43.1



Source: U.S. Census Bureau, 2019 American Community Survey 5-year estimates

Sex/Race/Hispanic or Latino Ethnicity

Total Population	49,267
Male	49.8%
Female	50.2%
White	94.0%
Black or African American	1.9%
American Indian and Alaska Native	0.1%
Asian	0.5%
Some Other Race	2.2%
Two or More Races	1.3%
Hispanic or Latino (of any race)	5.7%

Source: U.S. Census Bureau, 2019 American Community Survey 5-year estimates

Population and Households by Municipality

Municipality	Population	Households
HENRY COUNTY	49,267	22,165
Village of Alpha	578	280
Village of Andover	534	225
Village of Annawan	908	416
Village of Atkinson	1,248	473
Village of Bishop Hill	118	68
Village of Cambridge	2,203	922
Village of Cleveland	285	104
Village of Coal Valley*	158	52
City of Colona	5,096	2,366
City of Galva	2,541	1,342
City of Geneseo	6,599	3,124
Village of Hooppole	184	78
City of Kewanee	12,547	5,799
Village of Orion	2,006	801
Village of Woodhull	740	370
Unincorporated Area	13,522	5,745

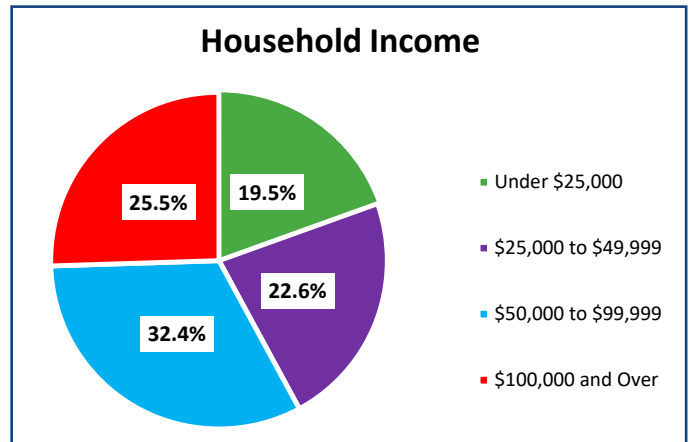
Source: U.S. Census Bureau, 2019 American Community Survey 5-year estimates

* Coal Valley only includes portion in Henry County, 2010 Census figures.

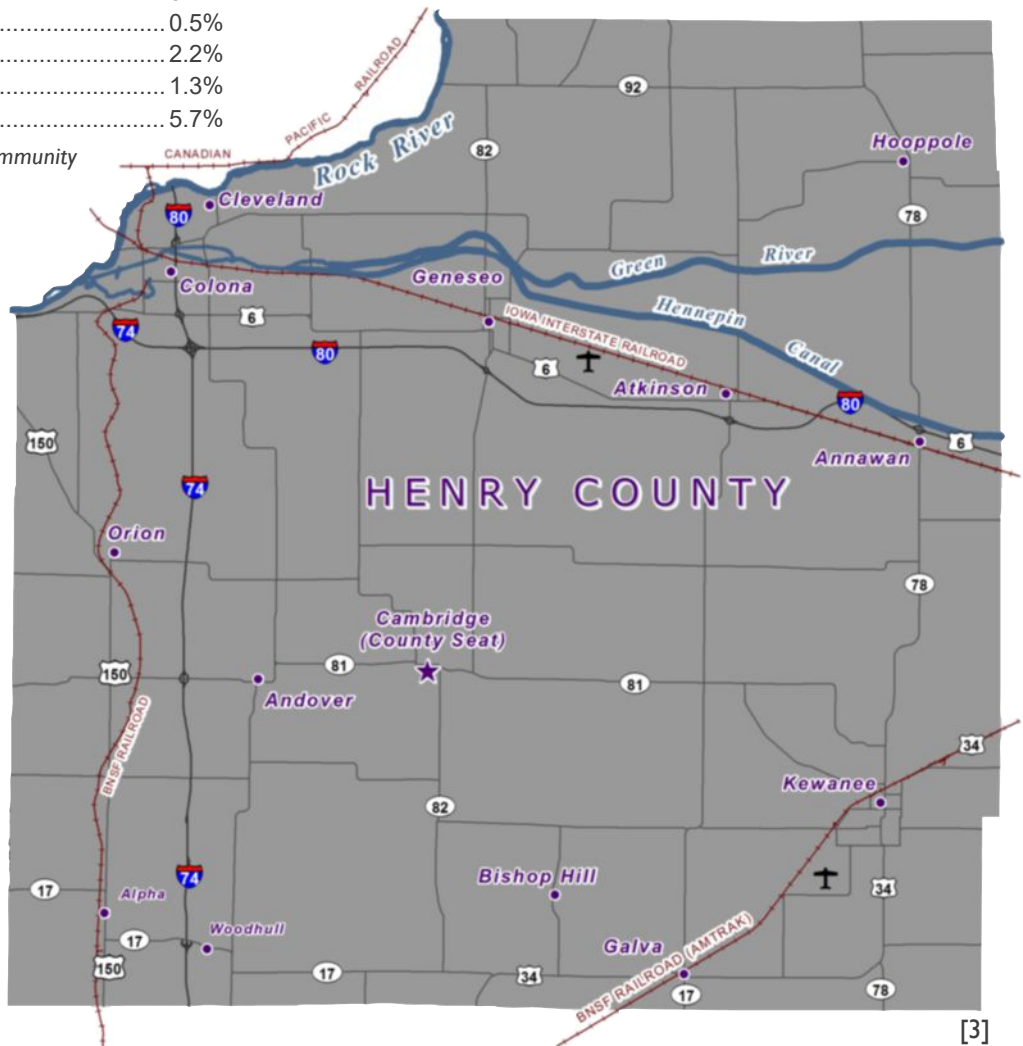
Income

Median Household Income..... \$59,933
 Median Family Income \$76,108
 Per Capita Income..... \$30,345

Source: U.S. Census Bureau, 2019 American Community Survey 5-year estimates



Source: U.S. Census Bureau, 2019 American Community Survey 5-year estimates



Transportation and Utilities

Air Service

Quad City International Airport (QCIA)

- Distance from Henry County 30 miles
- Major Air Passenger Carriers and Hubs:
 - Allegiant** to Las Vegas, Orlando-Sanford, Phoenix-Mesa, St. Petersburg-Clearwater
 - American Eagle** to Chicago O'Hare, Dallas-Ft. Worth
 - Delta** to Atlanta, Detroit, Minneapolis-St. Paul
 - United Airlines** to Chicago O'Hare, Denver
- Daily Flights 21-23
- Runway Lengths 10,000 ft., 7,300 ft., and 5,000 ft.
- Airport Code MLI
- Fixed Base Operator (FBO) Elliot Aviation
- Additional Services: Charter handling, customer care services, free Wi-Fi, two restaurants, gift shop, easy interstate access, refueling services, QCIA-Airport Services, LLC □ fueling for Jet-A and uploading/offloading cargo freight

Source: Quad City International Airport

Other Regional Air Service Providers

- Chicago Midway International Airport (MDW)
- Davenport Municipal Airport (DVN)
- Eastern Iowa Airport (CID)
- Gen-Airpark Airport (Geneseo) (3G8)
- Kewanee Municipal Airport (KEZI)
- O'Hare International Airport (ORD)
- Peoria International Airport (PIA)

Source: Quad City International Airport

Utilities

Gas and Electric

- Ameren IP
- Corn Belt Energy
- MidAmerican Energy
- Municipally owned utilities
- Nicor Gas

Ethanol Plants

- Big River Resources Galva, LLC
- Patriot Renewable Fuels, LLC

Wind Farms

- Bishop Hill Energy
- Bishop Hill II

Source: Local Providers

Water & Sanitary Sewer

- Municipally owned systems

Communication Services

Broadband: High Speed Fiber Optic Network located throughout the county

Newspapers 5

Radio Stations 4

Telephone Service: Frontier Communications, Geneseo Telephone, Henry County Telephone, Mid-Century Telephone, SBC, Verizon, Woodhull Telephone

Long Distance: AT&T, Comcast Cable Communications, Frontier Communications, Geneseo Communications Services, Inc., Mediacom Communications Corporation, Network Business Systems, Sprint Nextel Corporation, US Cellular, Verizon Communications

Cellular: AT&T, Sprint PCS, U.S. Cellular, Verizon

Source: Local providers and Broadband Illinois

Motor Freight Carriers

- B&M Transportation
- Bell Trucking
- Betcher Craig Trucking Inc.
- FedEx Freight
- Hutchinson Trucking
- Jeffries & Son Trucking
- Luke Weber Trucking
- Nanninga Trucking Inc.
- United Parcel Service (UPS)
- VanOpdorp Trucking
- Woolley Trucking LLC

Source: Infogroup, March 2021



Highway Service

Interstates: I-74, I-80, I-88, I-280

Federal: U.S. 6, 34, 150

State: IL 5, 17, 78, 81, 82, 84, 92, 94

Waterways

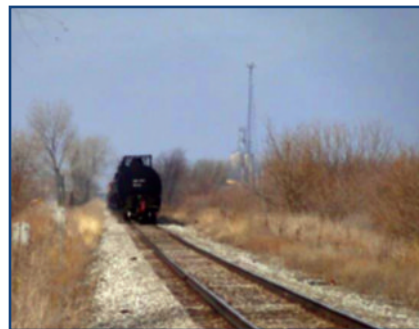
Rock River - Navigable for recreation

Mississippi River - Close proximity from Henry County. Access to barge terminals that are served by truck and rail.

Rail

- Burlington Northern Santa Fe (BNSF)
- Canadian Pacific (Dakota, Minnesota, and Eastern)
- Iowa Interstate Railroad (IAIS)

Source: Illinois Department of Transportation



International Trade Service

- U.S. Customs Port of Entry
- Computerized Paired Port System
- Foreign Trade Zone #133
- Customs Bonded Motor Carriers
- Customs House Brokers/International Freight Forwarders

Source: Anthony Howe from U.S. Customs & Border Protection Office

Employment and Economy

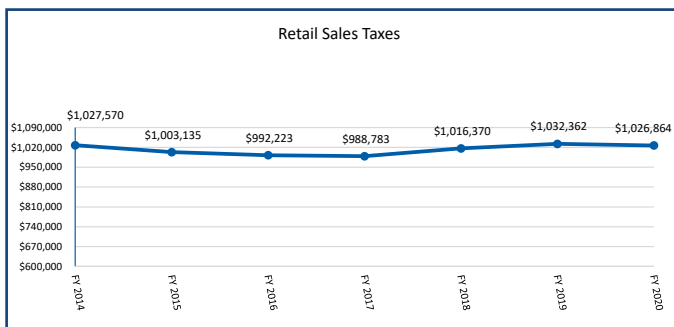
Top Employers

Company	Employees	Industry
Great Dane Trailers	600.....	Manufacturing
Kewanee City Government/Park District Health Department/Prison.....	530.....	Government
Geneseo School District.....	294.....	Education
Hammond Henry Hospital	260.....	Health Care
Springfield Armory	250.....	Manufacturing
Walmart Supercenter.....	250.....	Retail
OSF St. Luke Medical Center.....	250.....	Health Care
Henry County Courthouse.....	230.....	Government
KONE Inc.....	190.....	Manufacturing
Hillcrest Home	122.....	Health Care
Royal Oaks Care Center	120.....	Health Care

Number of farms in Henry County 1,353
 Total producers/farmers..... 2,147
 Percentage of family farms..... 94%
 Market value of all farm products sold..... \$353 million

Source: Infogroup, Reference USA, and individual employers, 2021; 2017 Census of Agriculture County Profile

Retail Sales Taxes



Source: Illinois Department of Revenue (Total retail sales of the fiscal year)

ACCRA Cost of Living (Composite)

Henry Co. (Quad Cities MSA)	90.4
Ames, IA	99.4
Cedar Rapids, IA	95.7
Chicago, IL	123.9
Des Moines, IA	87.9
Iowa City, IA.....	98.6
Kansas City, MO.....	95.2
Peoria, IL	90.1
Rockford, IL	90.4

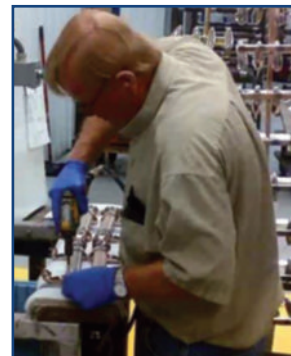
Source: Council for Community and Economic Research, 2020 Annual Cost of Living Index

Development Resources

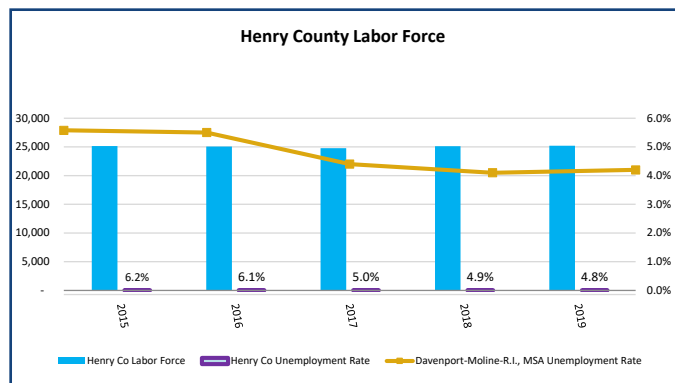
There are many development incentives and programs available in Henry County including:

- Revolving Loan Funds
- Tax Incentives
 - TIF Programs
 - Enterprise Zones
- Low Interest Loans
- Direct Government Assistance Programs
- Indirect Government Assistance Programs

Source: HCEDP and Local Jurisdictions



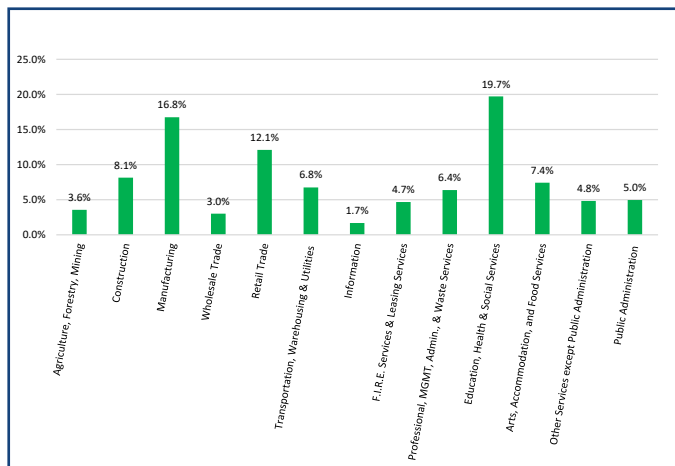
Labor Force



*Davenport, Moline, Rock Island, IA-IL Metropolitan Statistical Area

Source: U.S. Bureau of Labor Statistics

Employment by Industry



Source: U.S. Census Bureau, 2019 American Community Survey 5-year estimates

Financial Institutions*

Banks.....	5
Credit Unions.....	2
Savings & Loans.....	3
Total Assets	\$6,610,558,000

Source: Federal Deposit Insurance Company (FDIC), National Credit Union Administration (NCUA), April 2020

* with FDIC insured Main Branches in Henry County

Quality of Life

Educational Attainment

High School Graduate or higher 91.2%
 Bachelor's degree or higher 23.3%

Source: U.S. Census Bureau, 2019 American Community Survey 5-year estimates

Schools and Enrollment

Elementary Schools □ 14 (2 private)
 High Schools □ 8
 Middle Schools □ 3
 Enrollment □ 8,274 (all schools)
 Grades PK-5 □ 4,018
 Grades 6-8 □ 1,876
 Grades 9-12 □ 2,380
 Student/Staff Ratio – 15:1
 Graduation Rate □ 91.5%
 State of Illinois average □ 86%

Source: ISBE 2019-2020 Fall Enrollment Counts & 2018-2019 School Metrics, 2021 Public School Review



Housing

Housing Units

Total Housing Units 22,165
 Occupied 19,856
 Vacant 2,309

Source: U.S. Census Bureau, 2017 American Community Survey 5-year estimates

Median Home Values

Henry County, IL \$119,200
 Rock Island County, IL \$119,400
 Peoria County, IL \$129,800
 Scott County, IA \$163,200
 Davenport-Moline-Rock Island, IA-IL MSA \$136,200

Source: U.S. Census Bureau, 2019 American Community Survey 5-year estimates

Average Sales Price

Illinois QC \$125,100
 Milan & Rural Rock Island County \$157,500
 Henry County \$136,300
 Mercer County \$113,100
 Iowa QC \$248,700

Source: Ruhl & Ruhl Realtors (Spring 2020 Facts & Trends Report)

Climate

Average Yearly Temperature 49.0°F
 Average Summer Temperature 71.4°F
 Average Winter Temperature 21.4°F
 Average Precipitation 37.6 in.
 Average Snowfall 31.6 in.

Source: National Weather Service 1981-2010 Normals, Kewanee Station

Medical Care

5 Nursing homes
 4 Assisted Living
 2 Hospital Districts: Geneseo, Kewanee
 2 Emergency Rooms
 48 Medical beds
 37 Long term hospital beds
 Access to over 50 physicians, 25 dentists and 20 chiropractors

Source: Local Facilities

Lodging

Hotels/Motel 5
 Bed & Breakfasts 4

Source: Henry County Tourism Bureau

Culture

Movie Theaters 2
 Stage Theater 1
 Museums and Historical Societies 15
 State Historic Site 1
 Wineries 1
 Annual Events and Festivals More than 30

Henry County offers a variety of festivals, events and holiday celebrations. Located within a half an hour of the Quad Cities - Illinois/Iowa Metro Area, which offers minor league baseball and hockey, road races, major concert events, Nat. Geo. Giant screen and IMAX theaters, a TPC golf course (an annual stop on the PGA Tour), and two civic centers, seating over 12,000 people each.



Source: Local facilities

Recreation

City Parks 21
 State Parks 2
 Major Recreation Trails 2
 □ Hennepin Canal Parkway
 (part of the American Discovery Transcontinental Trail)
 □ Rock River Waterway Trail
 Campgrounds 6
 Swimming Pools 7
 Golf Courses 1 private, 5 public
 YMCA (Kewanee) 1

Source: Local facilities

Economic Development:
 Gary Bradley, Chair
 401 East Third Street
 Kewanee, IL 61443
 309-853-4200
 E-mail: gbradley@cityofkewanee.net

Tourism:
 Cheryl Osborne, Director
 210 West Third Street
 Kewanee, IL 61443
 309-761-8473
 E-mail: director@visithenrycounty.com



Henry County Economic Development Partnership (HCEDP) is an equal opportunity provider and employer.

